

**BAULTAR**  
DURABLE SOLUTIONS



mason grogan  
**INDUSTRIAL**  
SPECIALIST MATERIALS FOR DESIGN ENGINEERS

# ABRASTOP™

## FLOORING SYSTEM



SOLUTIONS FOR MASS  
TRANSIT & FREIGHT TRANSPORTATION

# PRODUCTS

The ABRASTOP™ Floor Covering is available in a variety of products, developed for the mass transit and the railway transportation markets.

## ABRASTOP™

- Durable floor covering
- Solution adapted for vehicles equipped with a subfloor
- Protects the subfloor
- Solve existing problems like water infiltration, slippery surface and premature wear.

## ABRASTOP™/FIBRE

Strengthened version of ABRASTOP™ Floor Covering with fiberglass reinforcement that allows to:

- Overhaul vehicles that are already in service
- Add value to old vehicles
- Reduce number of panels and seams
- Offer more flexible layout arrangements
- Improves esthetics appearance
- Insert logos, pictograms, and stripes
- Protects the existing subfloor
- Overlap the discontinuities of the subfloor

## ABRASTOP™/FOAM

- Flooring system designed for integration in transportation vehicles
- Floor covering and subfloor are integrated in one system
- Offered in many thicknesses
- Installation in one simple step
- Economical solution due to its exceptional life cycle
- Available in two versions:

### LITE VERSION

- Ideal solution for mass transit market since it is the lightest flooring system in North America.

### STANDARD VERSION

- Higher impact resistance
- Ideal solution for vehicles in which the floor is subject to more severe conditions, such as locomotive cabs
- Option of protective metal edges for top stairways or trap doors





The image shows four rectangular samples of ABRASTOP flooring material stacked on top of each other. The samples are arranged diagonally from the top left to the bottom right. The background is the interior of a bus, with blue seats and metal handrails visible. The top sample is labeled 'ABRASTOP™'. The second sample is labeled 'ABRASTOP™/FIBRE'. The third sample is labeled 'ABRASTOP™/FOAM LITE'. The bottom sample is labeled 'ABRASTOP™/FOAM'.

ABRASTOP™

ABRASTOP™/FIBRE

ABRASTOP™/FOAM LITE

ABRASTOP™/FOAM



# EXPERT SERVICE

Baultar provides a premium service to its customers through the complete manufacturing and assembling process of the ABRASTOP™ floor covering product line.

## ENGINEERING AND DESIGN

The Baultar team assists its customers in all phases of the project: review of the requirements/specifications, on site validation visit, design review phases and documentation, manufacturing, quality control, installation and after sales service.

## PROJECT MANAGEMENT

Each project is assigned to an experienced project manager to ensure project schedule and requirements are met.

## FORMATION

The qualified workers of Baultar provide the customers support for the technical and maintenance aspects of the floor system. An installation training service is also provides help to customers to efficiently integrate the product in their own vehicles.



# INTEGRATION MADE EASY

## 1- CUT TO FIT PANELS

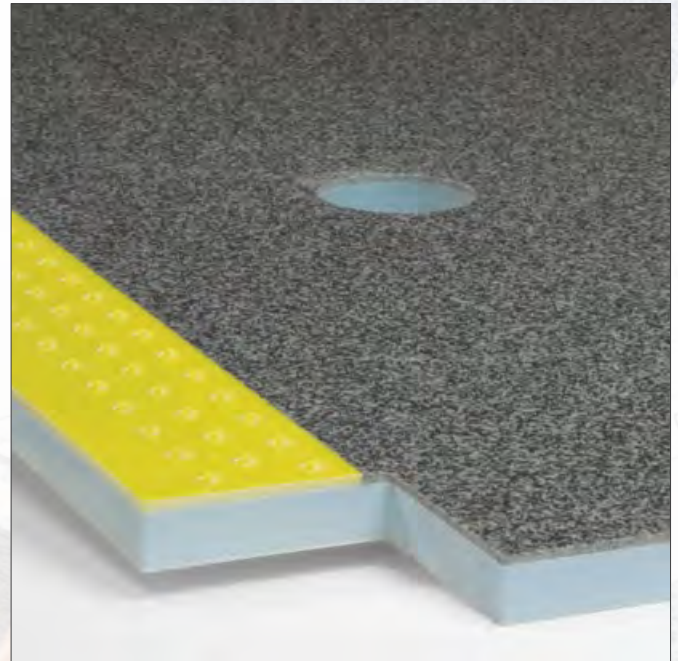
During design, panel sizes and shapes are defined. Panels are cut using CNC machine to the approved drawing.

## 2- CUSTOMIZED PACKAGING

All our flooring solutions are delivered in a kit in a specific packing order that allows an optimal installation process in the vehicle.

## 3- REDUCED INSTALLATION TIME

ABRASTOP™/FOAM is the only product available that includes the Floor covering integrated to the Floor Panels. Our customers benefit from the reduced installation time since it becomes a one step installation.









# CUSTOMIZED SOLUTIONS

A variety of options can be added to ABRASTOP™ product line in order to meet specific needs.

## SPECIAL DEVELOPMENTS

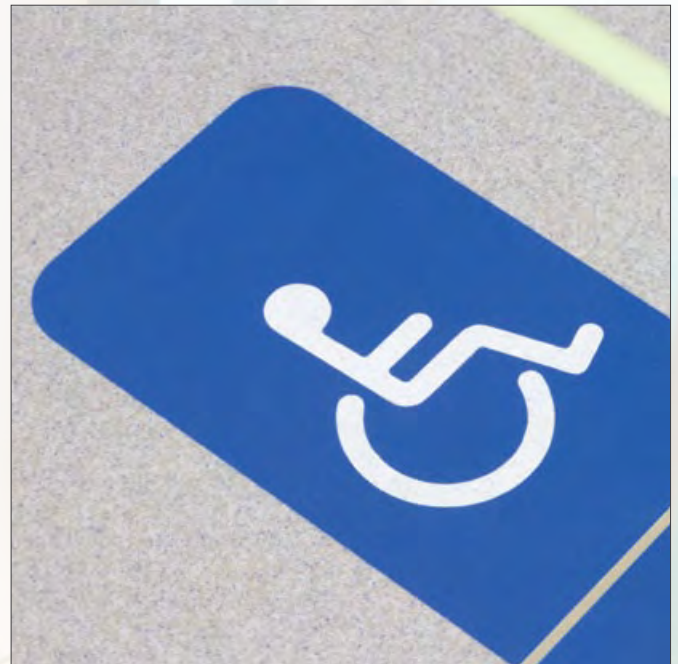
Upon request the Baultar team designs flooring solutions adapted to specific needs.

## WIDE PALETTE OF COLORS

ABRASTOP™ Floor Covering comes in several colors. Special granite-effect colors are developed on request.

## STEPS

Steps can be covered with ABRASTOP™. To make them safe, lines of silicone carbide lines can be added to make them slip resistant. Photoluminescent lines allow safe evacuation in case of emergency.



## PICTOGRAMS

Pictograms, logos or other designs can be incorporated to ABRASTOP™ Floor Covering.



## COVE MOLDING AND JOINTS

The cove moldings made of ABRASTOP™ are harmonized with the floor.



# DURABILITY

The excellent lifetime of ABRASTOP™ Floor Covering makes it the most economical system used for the industry. In the Montreal subway, the ABRASTOP™ has proven itself: since 30 years it has stayed in excellent condition and will last for many more years.

High traffic areas like elevators, lobbies and hallway are also locations where it is appropriate to install a floor covering that will stand the movement of thousands of people every day.

## WEAR RESISTANT

The incomparable strength of the ABRASTOP™ allows it to remain in good condition, without any maintenance repair or replacement over its entire operating lifetime.

## EASY CARE

Regardless of the kind of dirt, Abrastop remains easy to clean throughout its lifetime due to its non-porous surface.

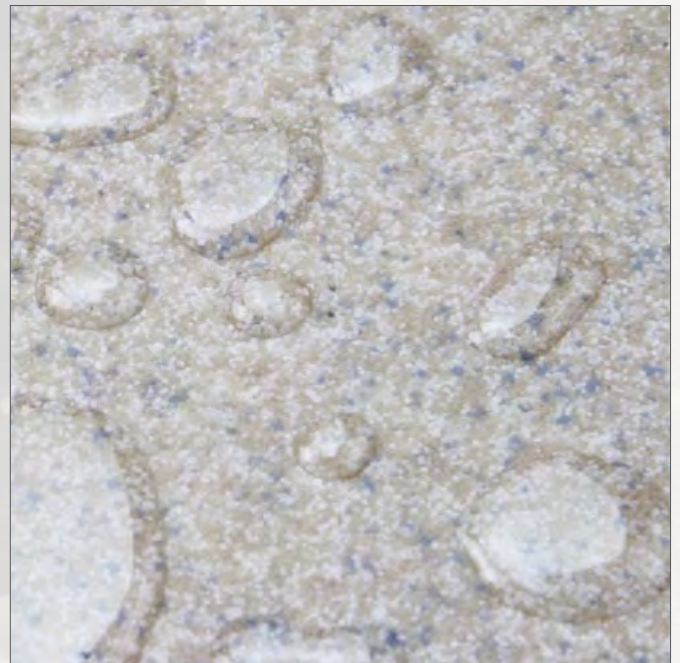
- Easy graffiti cleanable
- Easy chewing gum removable





## LOW LIFE CYCLE COST

The full life expectations of ABRASTOP™ covering, the low cost of maintenance and lack of need for repairs, all combine to make this the most economical flooring - by far!



## WATERPROOF

The ABRASTOP™ Floor Covering acts as an effective barrier against liquid infiltration, protecting structures and subfloors from decomposition and corrosion.

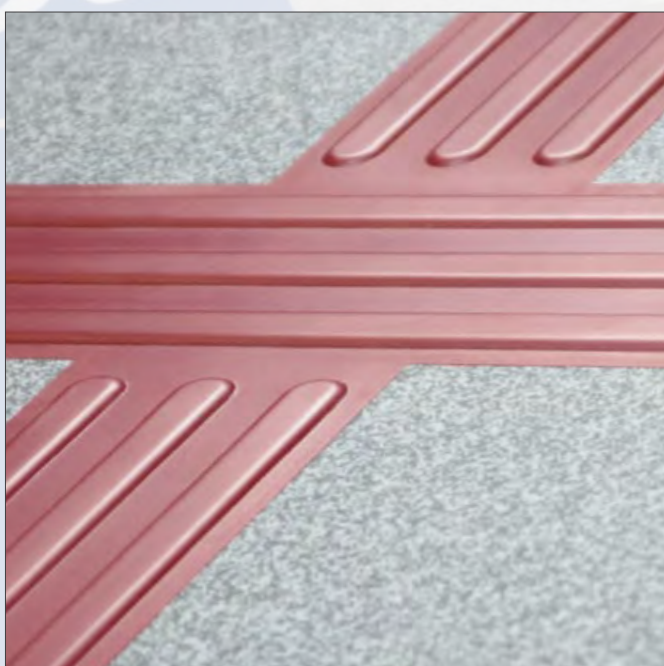


# SAFETY

Meet: fire, smoke and toxicity requirements for mass transit.

## SLIP-RESISTANCE

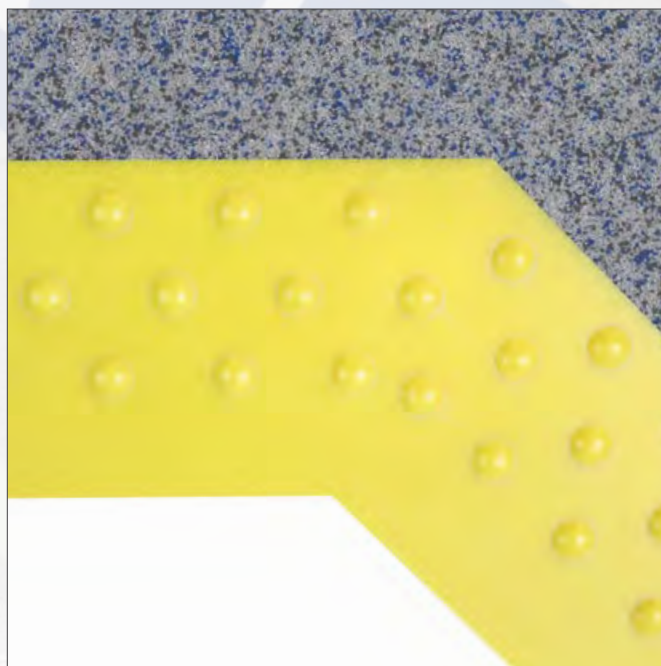
Through the colored aggregates used in its composition, the ABRASTOP™ stays slip-resistant even when it is wet. Its non-slip surface will last for the entire vehicle life.



## TACTILE STRIPS

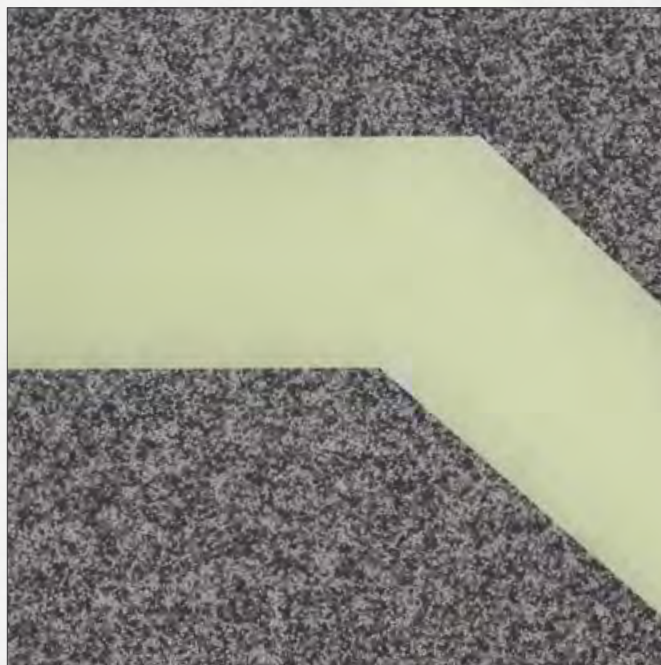
The tactile strips provide guidance for visually impaired persons to help facilitate their movements inside the vehicle.





## SLIP-RESISTANT STRIPS

Elevated strips or an embossed pattern provide a better grip to the floor at specific locations. The visual color contrast to meet ADA requirements.



## PHOTOLUMINESCENT MARKING

In the absence of light, the pigmented stripes emit an intense glow, visible for more than 90 minutes, to effectively lead the passengers to the exit.



# ASK US

The Baultar team will support you at all stages of your project, from choosing the solution that best fits your needs to its integration in the vehicle. Baultar is always open to new developments to optimally meet our customers' needs.

# CONTACT US

For almost 30 years, Baultar has developed and produced a range of products specially designed for the freight and mass transit industry. All our products, including flooring solutions, has been subjected to an exhaustive number of laboratory tests and therefore allows maximum conformity to the most stringent market needs.



[www.baultar.com](http://www.baultar.com) | [mkt@baultar.com](mailto:mkt@baultar.com)  
355 Parc-Industriel Street  
Windsor, Québec Canada J1S 3A9  
T (1) 819 845-7110 F (1) 819 845-5600



**mason grogan**  
**INDUSTRIAL**  
SPECIALIST MATERIALS FOR DESIGN ENGINEERS

[www.grogangroup.com](http://www.grogangroup.com) | [salesmg@grogangroup.com](mailto:salesmg@grogangroup.com)  
108 - 110 Carnarvon Street  
Silverwater, Australia NSW 2128  
T (02) 9748 3838 F (02) 9748 2525

SOLUTIONS  
FOR  
MASS TRANSIT VEHICLES

SOLUTIONS  
FOR  
TRAINS & BUSES

CUSTOMIZED PRODUCTS  
FOR TRANSPORT VEHICLES  
& INFRASTRUCTURES