

ABRASTOP™ FOAM LOCOMOTIVE FLOORING

Structural flooring system with integrated covering



mason grogan
INDUSTRIAL

SPECIALIST MATERIALS FOR DESIGN ENGINEERS

BAULTAR
FLOORING SOLUTIONS

DURABLE

EASY TO CLEAN

EXCELLENT NOISE ATTENUATION

ROT-PROOF

ABRASTOP™ FOAM LOCOMOTIVE FLOORING

DESCRIPTION

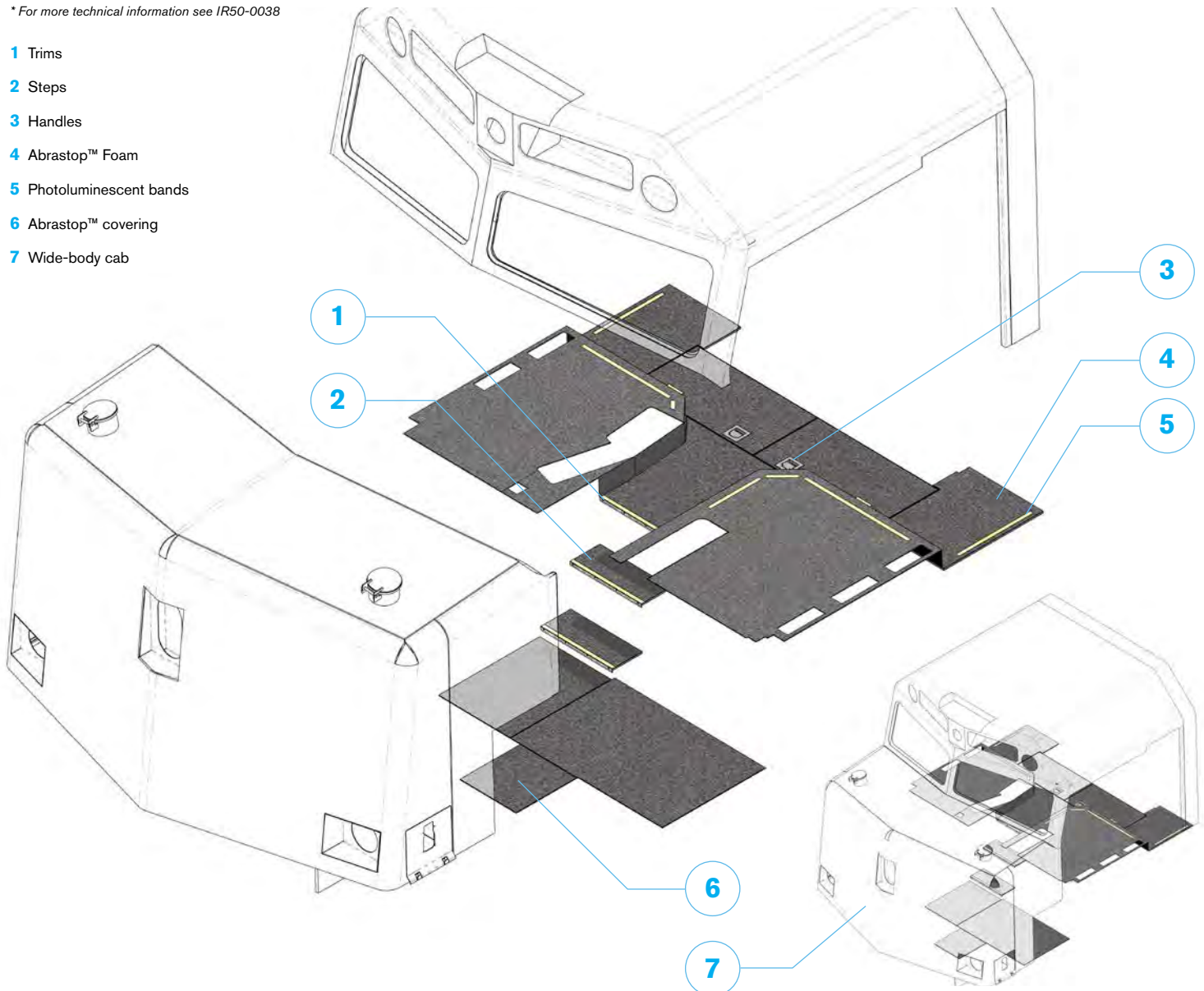
The Abrastop™ Foam is a laminate of the Abrastop™ floor covering, a heavy-duty thermoset foam core, and a reinforcement fiber. This integrated floor is bonded with a flexible, high-performance adhesive, or fastened directly onto the carbody frame. Seams between panels, 5 mm wide (3/16 in.), are filled with a non-stick bond-breaker that is covered with a flexible sealant to prevent infiltration of liquids. This product is particularly suited for locomotive cab floors. Wider gaps around control stands or along walls can be covered with a metallic trim.

DIMENSIONS

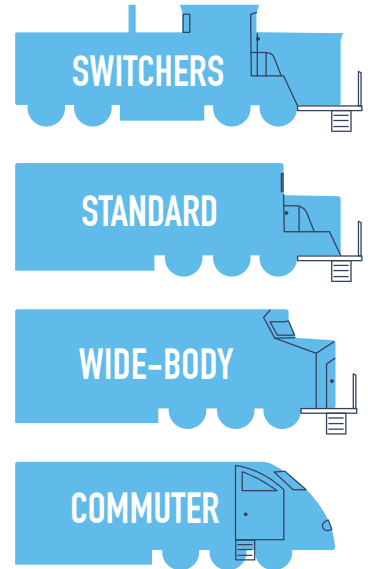
DIMENSIONS	Panel size of up to 1500 mm x 3000 mm (5 ft x 10 ft) that can be customized to reduce waste and facilitate installation	
THICKNESS	Standard thickness for locomotive installation: 18 mm (23/32 in. \pm 1/32 in.) Thicknesses can be adjusted from 13 mm \pm 1.0 mm (1/2 in. \pm 1/32 in.) to 25 mm \pm 1.0 mm (1 in. \pm 1/32 in.) to accommodate height constraints	
DEFLECTION	Meets L/250 for a span of 800 mm (31.5 in.) for an 18 mm thickness under a load of 490 kg/m ² (100 lbs/ft ²), i.e. deflection of 3.2 mm (1/8 in.)	
SURFACE DENSITY	Thickness mm (in.)	Weight kg/m ² (lb/ft ²)
	13 (0.51)	15.62 \pm 1 (3.20 \pm 0.2)
	15 (0.59)	16.84 \pm 1 (3.45 \pm 0.2)
	18 (0.71)	18.80 \pm 1 (3.85 \pm 0.2)
FOAM DENSITY	0.64 g/cm ³ (39.95 lb/ft ³)	

* For more technical information see IR50-0038

- 1 Trims
- 2 Steps
- 3 Handles
- 4 Abrastop™ Foam
- 5 Photoluminescent bands
- 6 Abrastop™ covering
- 7 Wide-body cab



FOR ALL TYPES OF CARS



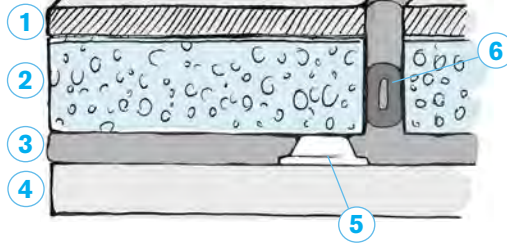
ABRASTOP™ FOAM LOCOMOTIVE FLOORING

INSTALLATION

Installation kits are available for all locomotive types (wide-body, standard, switchers, and/or commuter)

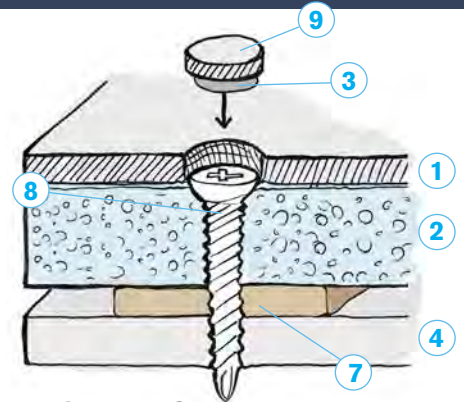
Bonded, leveled with bumpers (new), or fastened and leveled with cork tape (traditional fasteners)

- | | |
|-------------|--------------------------------|
| 1 Abrastop™ | 6 Silicone tube |
| 2 Foam | 7 Cork tape |
| 3 Sealant | 8 Self-drilling tapping screws |
| 4 Beam | 9 Abrastop cap |
| 5 Bumper | |



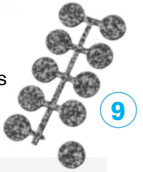
BONDING

High-performance adhesive, bumpers to level panels correctly, and sealant for seams to avoid infiltration of liquids



FASTENING

Self-drilling tapping screws. Baultar provides Abrastop™-made discs to use as caps for hiding fasteners, plus cork tape for leveling and sealing



PANEL OPTIONS

Floor kits are provided either in panels to be cut to fit or in pre-cut panels in our CNC.

CUT-TO-FIT OR PRE-CUT

- Can include trap door handle and pre-installed trim
- Can be pre-drilled if beam location is provided
- Engineering provides panel drawings for approval

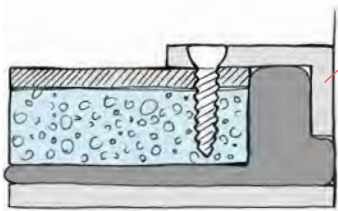
CUT ON-SITE

- Provisioning of rectangular panels (4' x 8' or other dimensions as per cab dimensions to reduce waste)
- Easily cut with a circular saw and a concrete blade
- Trim and fastener adhesives or other hardware are provided for one-stop shopping

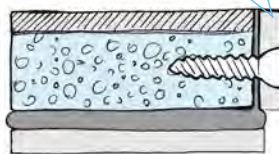
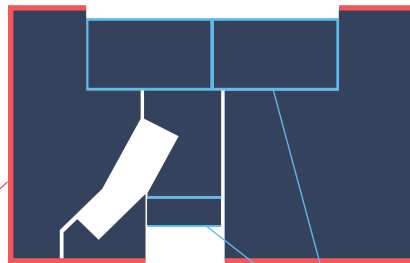
TRIMS

Extra trim is provided in case cab variations are found

Trims are used for two purposes:



- As mouldings, to cover gaps along control stands or walls for a perfect finishing touch



- To protect exposed edges of flooring panels for increased durability

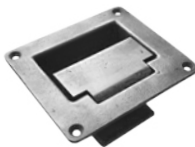


ABRASTOP™ FOAM LOCOMOTIVE FLOORING

TRAP DOOR HANDLES

Four different types of handles made of aluminum or stainless steel are offered. We recommend the stainless-steel latch (the third option shown) – a round and modern design.

Aluminum casting
HH11-0005



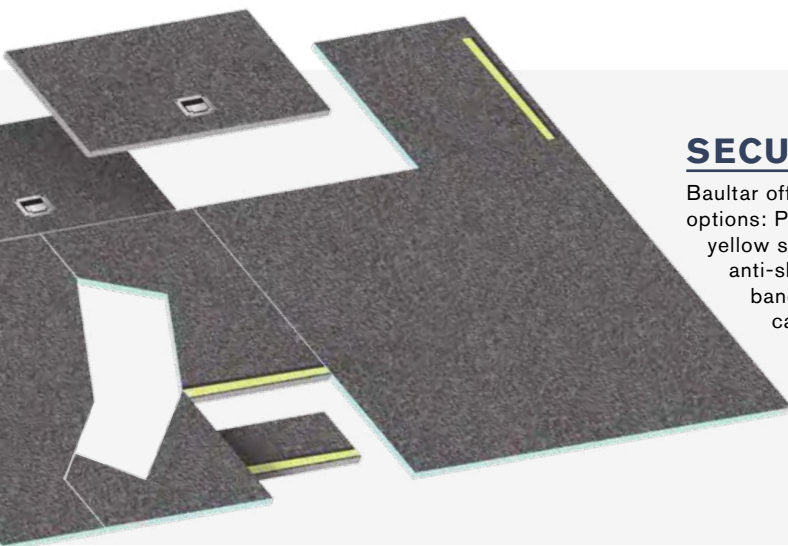
Pull ring
HH11-0004



Round stainless steel latch
HH11-0007



Stainless steel latch
HH11-0023



SECURITY OPTIONS

Baultar offers several security options: Photoluminescent bands; yellow security 3D surfaces; and anti-skid (AddGRIP) strips, bands, or surfaces. Patterns can be adjusted and located at different places as per the client's needs.

AddGRIP bands



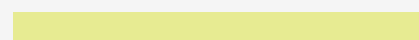
AddGRIP strips



Yellow warning



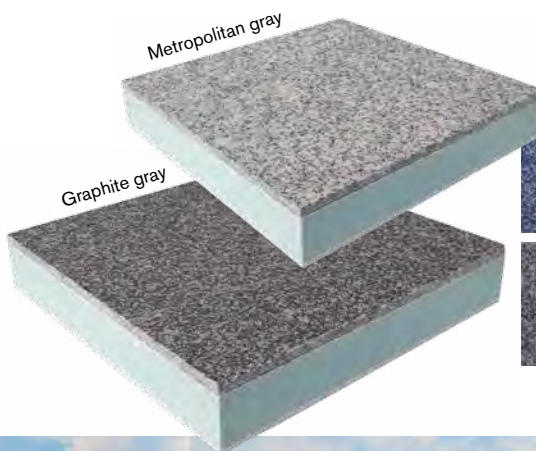
Photoluminescent bands



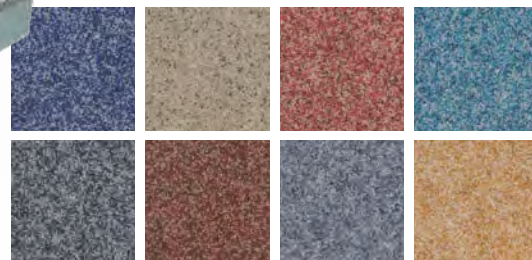
COLOR OPTIONS

Color selections usually have two opposed objectives: darker colors are used to minimize the appearance of dirt, and clearer colors are used to increase cab luminosity.

Based on your objective, we suggest our two most popular colors: "Graphite Gray" and "Metropolitan Gray". However, many other colors are also available. Should you wish to pick a more personalized color, please ask us for our color chart brochure.



Other colors available



Heavy-duty locomotive flooring
for a quick installation

CONTACT

FOR MORE INFORMATION
PLEASE CONTACT
MASON GROGAN INDUSTRIAL:

1300 859 960
or +61 (02) 9748 3838
salesmg@grogangroup.com
www.grogangroup.com



mason grogan
INDUSTRIAL
SPECIALIST MATERIALS FOR DESIGN/ENGINEERS